



PRAIRIE BRANCH FIELD

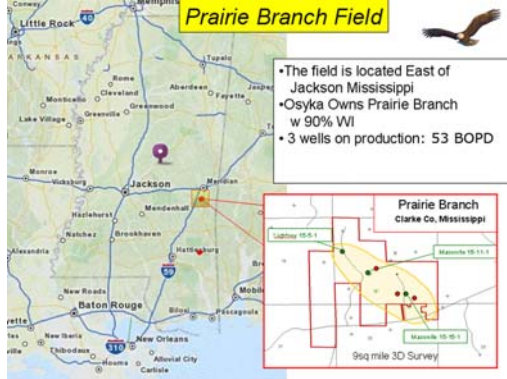
FARMOUT FACTSHEET

Osyka Permian, LLC is offering oil and gas investors an opportunity to farm in to a PUD drilling opportunity in the Prairie Branch Field, Clarke County, Mississippi. The wells will be targeting the Norphlet Sandstone and Smackover Limestone reservoirs proved productive by offset wells.

OSYKA PERMIAN, LLC

Prairie Branch Field is a low commitment work program farm in with a number of attractive follow-up targets in the Smackover and Haynesville formations.

Location Map



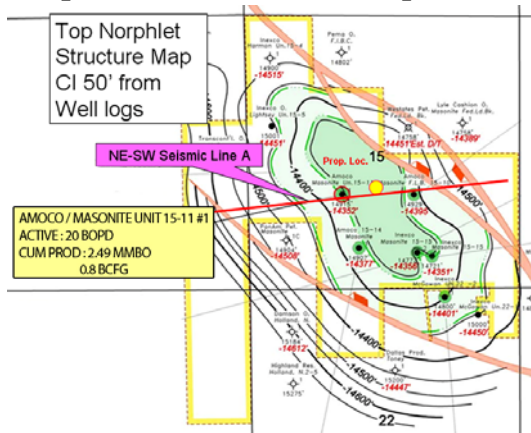
Field Statistics

Field Area:	580 Acres
Date Acquired:	2004
Initial Production:	Dec. 1970
Current Status:	Producing
Lease Status:	HBP
Outstanding Commitment:	None

Exploitation Target

Reservoirs:	Norphlet Sand, Smackover Limestone and Haynesville Sand
Oil Reserves:	474 MBO (Norphlet) 515 MBO (Smackover)

Norphlet Sand Structure Map



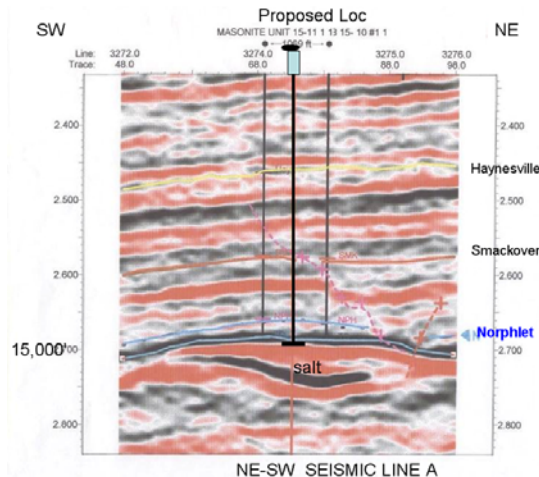
Farm-in Commitment

Drill 1 well to Norphlet:	US \$3.7 Million
Sidetrack well to Smackover:	US \$ 1.4 Million
Workover 2 wells:	US \$438 Thousand
Data for farminee:	9 sq. mile 3-D Seismic dataset and wells
Operator Availability:	Open to discussion

Farmin Timing

Timing:	Fourth Quarter 2011
Exclusivity:	Other 3 rd Party discussions ongoing

Field Seismic Cross Section



Contact Details

Ken W. Yarbrough
Vice President of Exploitation
Osyka Permian, LLC
15995 N. Barkers Landing
Suite 300
Houston, Texas 77079
1-281-293-0296 Office
1-281-293-0497 Fax
www.Osyka.com

"THE HUNT FOR RESOURCES BY RESOURCEFUL PEOPLE"